

## Product Highlights

### In-Vehicle Mobile Broadband

4G/LTE mobile connectivity lets you deploy a mobile broadband connection in a moving vehicle

### High-speed Connectivity

Enjoy high-speed wireless IEEE 802.11 ac with speeds of up to 866 Mbps, allowing for quick Internet access and data transfer

### Enterprise Class VPN options

A variety of powerful, yet easy to set up VPN tools give you flexibility in deployment and management



## DWM-321

# 4G LTE In-Vehicle Hotspot

## Features

### Connectivity

- WAN port to connect to the Internet
- Three 10/100/1000 Ethernet LAN ports to connect wired devices for high-speed activities
- Wireless 802.11ac/n/g/b/a

### Dual Cellular for Multiple Carriers

- Dual LTE mobile router
- Dual SIM slots allow you to use the same or different cellular providers to eliminate blind spots

### Security Features

- Supports WPA, WPA2, WPA-PSK, WPA2-PSK, and 802.1x encryption
- Dual-active firewalls (NAT/SPI) to control traffic and help resist attacks over the Internet

### Advanced VPN Features

- Supports VPN tunnels for IPSec, OpenVPN, L2TP (over IPSec), PPTP, and GRE
- VPN Scenarios: Site to Site, Site to Host, Host to Site, Host to Host
- IPSec NAT-Traversal

### Remote Management

- Compatible with D-Link Edge Cloud System (DECS) for remote management of devices

### Rugged and Flexible

- Wide operating temperature and humidity tolerance
- Wall mounting for optimal placement

The D-Link DWM-321 4G LTE In-Vehicle Hotspot is an easy-to-deploy high-performance router with mobile connectivity to allow easy access to mobile broadband networks. It's the easiest way to deploy an in-vehicle concurrent dual band hotspot gateway, providing passengers with Wi-Fi access in a moving vehicle such as public transport services.

## Connectivity On the Go

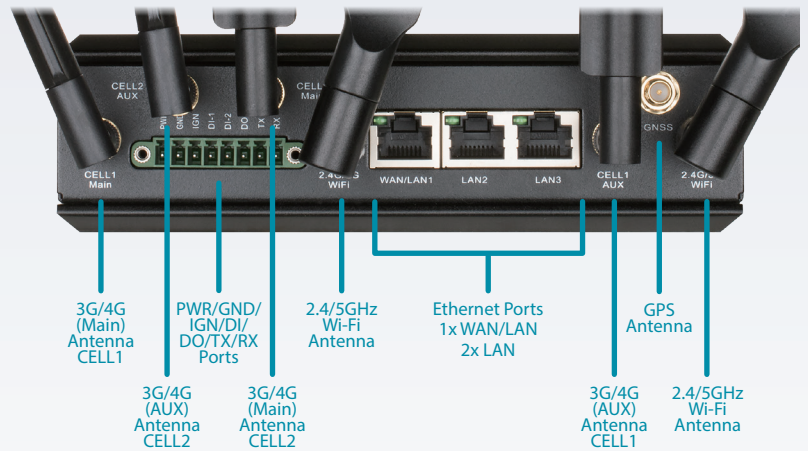
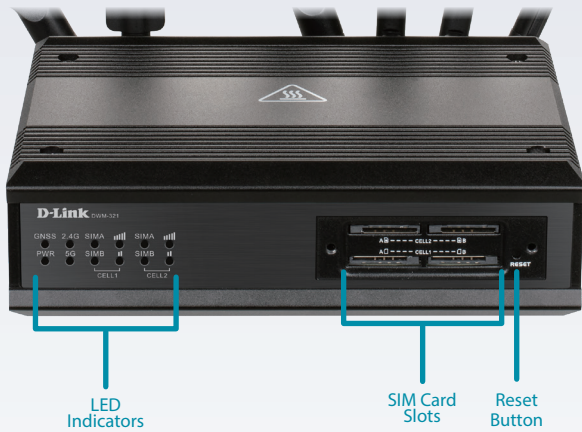
The DWM-321 acts as a hotspot gateway to let passengers in a vehicle connect to a 4G/LTE mobile connection, with fast downlink speeds of up to 150 Mbps, and uplink speeds of up to 50 Mbps. Deploy it in a moving vehicle to give passengers fast, responsive Internet access on the go. The blazing fast LTE connection allows multiple users to access e-mail and stream music and video all at the same time. Configurable dual-SIM fallback provides reliability and flexibility in mixed network environments.

## Reliable Virtual Private Networks

The DWM-321 4G LTE In-Vehicle Hotspot lets you create a high-speed Virtual Private Network (VPN) for access remotely or locally. It supports different tunneling technologies to establish tunnels between multiple sites for data transferring, such as IPSec, OpenVPN, L2TP (over IPSec), PPTP, and GRE. Advanced functions such as full tunnel, tunnel failover, tunnel load balance, NetBIOS over IPSec, NAT Traversal, and Dynamic VPN are also supported. With the DWM-321 you'll have all the tools you need to create the ideal VPN solution for your network.

## Robust

The industrial-grade casing means the DWM-321 provides reliable high-speed connectivity in extreme conditions. The corrosion-resistant zinc-plated steel case, wide operating temperature and humidity tolerance mean that the DWM-321 is ready for the most demanding M2M applications in virtually any environment. Wall mounts allow the DWM-321 to be mounted virtually anywhere for optimal connectivity.



**Example Network**



**Technical Specifications**

**General**

Cellular Frequency Support <sup>1</sup>	<p>SKU 1 (E)</p> <ul style="list-style-type: none"> <li>LTE Cat. 4 Bands 1/3/5/7/8/20/38/40/41</li> <li>UMTS/HSPA B1/B5/B8, 850/900/2100 MHz</li> <li>GSM/GPRS/EDGE: 900/1800 MHz</li> </ul> <p>SKU 4 (AU)</p> <ul style="list-style-type: none"> <li>LTE Cat. 4 Bands 1/2/3/4/5/7/8/28/40</li> <li>UMTS/HSPA B1/B2/B5/B8, 850/900/1900/2100 MHz</li> <li>GSM/GPRS/EDGE: 850/900/1800/1900 MHz</li> </ul>	<p>SKU 6 (EU)</p> <ul style="list-style-type: none"> <li>LTE Cat. 4 Bands 1/3/7/8/20/28A/38/40/41</li> <li>UMTS/HSPA B1/B8, 900/2100 MHz</li> <li>GSM/GPRS/EDGE 900/1800 MHz</li> </ul>
Maximum Cellular Data Throughput	<ul style="list-style-type: none"> <li>LTE FDD: 150 Mbps (DL) / 50 Mbps (UL)</li> <li>LTE TDD: 130 Mbps (DL) / 30 Mbps (UL)</li> <li>DC-HSDPA/HSUPA: 42 Mbps (DL) / 5.76 Mbps (UL)</li> </ul>	<ul style="list-style-type: none"> <li>WCDMA: 384 Kbps (DL) / 384 Kbps (UL)</li> <li>EDGE: 296 Kbps (DL) / 236.8 Kbps (UL)</li> <li>GPRS: 107 Kbps (DL) / 85.6 Kbps (UL)</li> </ul>
Device Interfaces	<ul style="list-style-type: none"> <li>One 10/100/1000 Ethernet WAN/LAN port</li> <li>Two 10/100/1000 Ethernet LAN ports</li> <li>DI/DO/TX/RX/Grounding ports</li> <li>One DC power input</li> </ul>	<ul style="list-style-type: none"> <li>D1: Four SIM slots (Two LTE Modem)</li> <li>A1: Two SIM slots (One LTE Modem)</li> <li>IGN (Ignition Sense) Power Control function</li> </ul>

# DWM-321 4G LTE In-Vehicle Hotspot

Antennas	<ul style="list-style-type: none"> <li>• D1: Four LTE external antennas (Two LTE Modem)</li> <li>• A1: Two LTE external antennas (One LTE Modem)</li> </ul>	<ul style="list-style-type: none"> <li>• Two Wi-Fi antennas</li> </ul>
Standards	<ul style="list-style-type: none"> <li>• IEEE 802.11ac/n/g/b/a</li> </ul>	
Wi-Fi Data Rates <sup>2</sup>	<ul style="list-style-type: none"> <li>• Up to 866 Mbps with 802.11ac clients</li> <li>• Up to 300 Mbps with 802.11n clients</li> </ul>	<ul style="list-style-type: none"> <li>• 6/9/11/12/18/24/36/48/54 Mbps in 802.11g mode</li> <li>• 1/2/5.5/11 Mbps in 802.11b mode</li> </ul>
<b>Functionality</b>		
Wireless Security Features	<ul style="list-style-type: none"> <li>• WPA/WPA2/WPA-PSK/WPA2-PSK/802.1x encryption</li> </ul>	
Firewall	<ul style="list-style-type: none"> <li>• Network Address Translation (NAT)</li> <li>• Stateful Packet Inspection Firewall with Stealth Mode</li> <li>• IPS Access Control: Packet Filters</li> <li>• Application Filter</li> </ul>	<ul style="list-style-type: none"> <li>• URL Blocking</li> <li>• MAC Address Control</li> <li>• Content Filter</li> </ul>
Advanced Features	<ul style="list-style-type: none"> <li>• QoS engine (Quality of Service)</li> <li>• SNMP Support</li> <li>• Port Forwarding</li> <li>• Virtual Server</li> <li>• GNSS <ul style="list-style-type: none"> <li>• Supports global positioning</li> <li>• Real-time data logging on local microSD card</li> <li>• Includes support for GPS/GLONASS/Galileo/BeiDou</li> </ul> </li> </ul>	<ul style="list-style-type: none"> <li>• Web-based UI</li> <li>• TR-069 CPE WAN Management Protocol</li> <li>• DMZ &amp; Pass Through</li> <li>• Captive Portal</li> <li>• Load Balance</li> <li>• DECS <ul style="list-style-type: none"> <li>• Fleet Tracking and Management</li> <li>• Remote Management of Devices</li> </ul> </li> </ul>
VPN	<ul style="list-style-type: none"> <li>• L2TP/OpenVPN/PPTP/IPSEC/GRE VPN</li> </ul>	
<b>Physical</b>		
Power	<ul style="list-style-type: none"> <li>• DC 9V / 2.7 A ~ 36 V / 0.7 A</li> </ul>	
Dimensions	<ul style="list-style-type: none"> <li>• 160 x 125 x 47 mm (6.30 x 4.92 x 1.85 in)</li> </ul>	
Weight	<ul style="list-style-type: none"> <li>• 865 g (1.9 lbs)</li> </ul>	
Temperature	<ul style="list-style-type: none"> <li>• Operating: -30 to 60 °C (-22 to 158 °F)</li> </ul>	<ul style="list-style-type: none"> <li>• Storage: -40 to 85 °C (-40 to 185 °F)</li> </ul>
Humidity	<ul style="list-style-type: none"> <li>• Operating: 10% to 95% non-condensing</li> </ul>	<ul style="list-style-type: none"> <li>• Storage: 0 to 95% non-condensing</li> </ul>
Certifications	<ul style="list-style-type: none"> <li>• CE</li> <li>• EN 50155</li> </ul>	<ul style="list-style-type: none"> <li>• EAC</li> </ul>
<b>Order Information</b>		
<i>Part Number</i>	<i>Description</i>	
DWM-321	4G LTE In-Vehicle Hotspot	

<sup>1</sup> Supported frequency band is dependent upon hardware SKU.

<sup>2</sup> Data rates are theoretical. Data transfer rate depends on network capacity and signal strength, and environmental factors.

Updated 2020/10/05