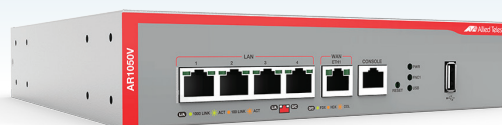


Secure VPN Router

AR1050V

Allied Telesis Secure Virtual Private Network (VPN) Routers are the ideal secure gateway for modern businesses. Integrated firewall and VPN functionality is combined with routing and switching, providing an innovative solution that is easy to use and very secure.


AMF PLUS
AlliedWare Plus™
OPERATING SYSTEM


As businesses adapt to faster paced operations, with increasing amounts of data, and the need to access company resources from outside the office, the demand for high performance VPN connectivity becomes more urgent.

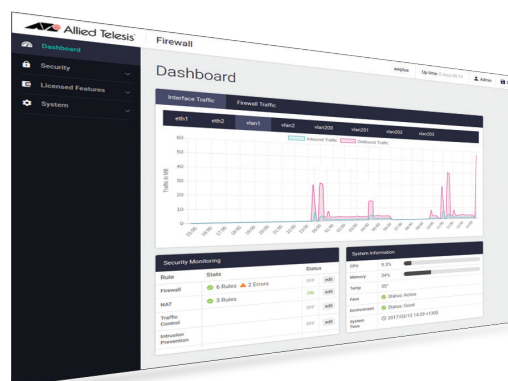
The AR1050V features comprehensive security and networking capabilities, meeting the demands of distributed businesses that require multi-site VPNs.

Secure Remote VPNs

The AR1050V supports IPSec site-to-site VPNs for connecting branch offices to a central office, providing employees company-wide with consistent access to the corporate network.

Easy to manage

The AR1050V runs the advanced AlliedWare Plus™ fully featured operating system, with an industry standard CLI. The Graphical User Interface (GUI) includes wizards for easy Internet connectivity and VPN creation, while the dashboard enables monitoring of traffic throughput and security status. Configuration of security zones, networks and hosts, and rules to limit and manage traffic, provides a consistent approach to policy management.

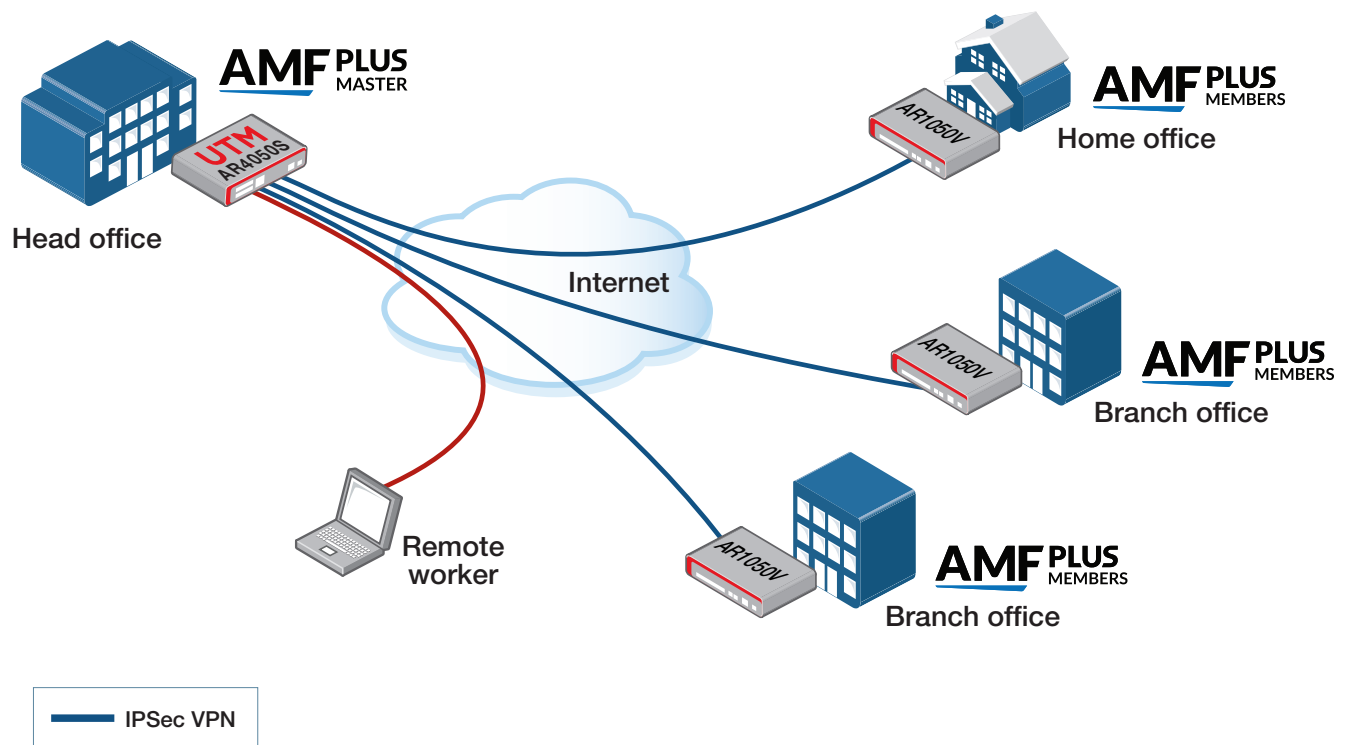


| Performance | |
|-------------------------|----------|
| Firewall throughput | 480 Mbps |
| Concurrent sessions | 100,000 |
| New sessions per second | 3,600 |
| IPS throughput | 135 Mbps |
| VPN throughput | 180 Mbps |

| FIREWALL ENGINE | |
|---|--|
| Intrusion Detection and Prevention System (IDS/IPS) | IDS/IPS provides monitoring, analysis and logging of suspicious events that occur on a network. It can also perform a variety of actions to prevent attacks. |
| URL filtering | Enables HTTP or HTTPS access to particular websites to be allowed (whitelist) or blocked (blacklist) with user-defined lists. |
| VIRTUAL PRIVATE NETWORKING (VPN) | |
| IPSec VPN for site-to-site connectivity | High-performance IPSec VPN allows the AR1050V to connect branch offices and other large sites, for secure sharing of business information. |
| SSL/TLS VPN for secure remote access | The OpenVPN® client allows easy access to corporate digital resources when away from the office. Secure ways to login include LDAP authentication and two-factor authentication, with options to use a code, certificates, or a one time password (OTP) via email. The TLS version for OpenVPN connections can be specified to encourage use of the latest and most secure version, and TLS Crypt provides ultimate security, with symmetric encryption including the key exchange for protection against TLS DoS attacks. |
| VPN pass-through | Pass-through enables VPN clients to make outbound connections using L2TP, PPTP or IPSec. |
| Redundant VPN gateway | Primary and secondary VPNs can be configured when using multiple WAN connections, for seamless failover of VPN connectivity to a remote site. |
| NETWORKING | |
| IPv6 support | Full support for IPv6 routing, multicasting and security is provided. |
| IPv6 transition technologies | DS (Dual Stack) Lite, Lightweight 4over6, and MAP-E support connecting IPv4 networks over an IPv6 Internet connection. |
| Autonomous Management Framework Plus (AMF Plus) | AMF Plus enables new devices to be pre-provisioned for zero-touch deployment. This simplifies installation, guarantees consistent configuration, and reduces setup time and cost. |
| AMF Plus backup/recovery | As an AMF Plus member, the AR1050V is automatically backed up, and can be recovered with plug-and-play simplicity. |
| Flexible deployment options | The AR1050V can be deployed in traditional NAT, Wire Mode and Network Tap modes. |
| 3G/4G/LTE USB modem ¹ | A 3G/4G/LTE USB modem offers an additional secure IPv4 or IPv6 data connection for critical services that can automatically switch to a mobile network whenever a primary data connection becomes available. |

¹For a list of supported USB modems, please refer to the Allied Telesis [USB Modem Compatibility List](#)

Key solution



Multi-site VPN connectivity

Allied Telesis Secure VPN Routers are the ideal integrated security platform for modern businesses. The powerful combination of VPN connectivity, secure remote access, and routing and switching, provides a single platform to connect and protect corporate data.

This example shows how the AR1050V can provide multisite connectivity back to a head office. IPSec VPNs to an Allied Telesis Unified Threat Management (UTM) Firewall ensure that all staff have full access to digital resources.

Automated network management

In addition to protecting and connecting modern networks, the AR1050V is fully supported by AMF Plus.

Autonomous Management Framework Plus (AMF Plus) is a sophisticated suite of management tools that automate and simplify many day-to-day network administration tasks. Powerful features like centralized management, auto-backup, auto-upgrade, auto-provisioning and auto-recovery ensure streamlined networking. Growing the network can be accomplished with plug-and-play simplicity, and network node recovery is fully zero-touch.

As part of an AMF Plus network, along with all of the network switches, the UTM Firewall and VPN Routers are automatically backed up, ensuring seamless recovery if required.

Features

Firewall

- ▶ Multi zone firewall
- ▶ Application Layer Gateway (ALG) for FTP, SIP and TFTP
- ▶ Bandwidth limiting control
- ▶ Firewall session limiting per user or entity (zone, network, host)
- ▶ Bridging between LAN and WAN interfaces
- ▶ Intrusion Detection and Prevention System (IDS/IPS)
- ▶ User-defined URL blacklists and whitelists (block or allow HTTP and HTTPS access to specific Websites)
- ▶ DoS and DDoS attack detection and protection
- ▶ Static NAT (port forwarding), double NAT and subnet-based NAT
- ▶ Masquerading (outbound NAT)
- ▶ Enhanced NAT (static and dynamic)
- ▶ Security for IPv6 traffic

Networking

- ▶ Routing mode / bridging mode / mixed mode
- ▶ Static unicast and multicast routing for IPv4 and IPv6
- ▶ DS-Lite, Lightweight 4over6, and MAP-E for connecting IPv4 networks over IPv6
- ▶ Policy-based routing
- ▶ PPPoE client with PADT support
- ▶ DHCP client, relay and server for IPv4 and IPv6
- ▶ Dynamic DNS client
- ▶ IPv4 and IPv6 dual stack
- ▶ Device management over IPv6 networks with SNMPv6, Telnetv6 and SSHv6
- ▶ Logging to IPv6 hosts with Syslog v6
- ▶ MAC address filtering on switch ports to secure communication of IoT and other devices

Management

- ▶ Allied Telesis Autonomous Management Framework™ Plus (AMF Plus) enables powerful centralized management and zero-touch device installation and recovery
- ▶ From AW+ 5.5.2-2, an AMF Plus license operating in the network provides all standard AMF network management and automation features, and also enables the AMF Plus intent-based networking features menu in Vista Manager EX (from version 3.10.1 onwards)

- ▶ Web-based GUI for device configuration and monitoring, with easy-start wizards for Internet connectivity and VPN creation.
- ▶ Industry-standard CLI with context-sensitive help
- ▶ Role-based administration with multiple CLI security levels
- ▶ Built-in text editor and powerful CLI scripting engine
- ▶ Comprehensive SNMPv2c/v3 support for standards-based device management
- ▶ Event-based triggers allow user-defined scripts to be executed upon selected system events
- ▶ Comprehensive logging to local memory and syslog
- ▶ Console management port on the front panel for ease of access
- ▶ USB interface allows software release files, configurations and other files to be stored for backup and distribution to other devices

Diagnostic Tools

- ▶ Automatic link flap detection and port shutdown
- ▶ Ping polling for IPv4 and IPv6
- ▶ TraceRoute for IPv4 and IPv6

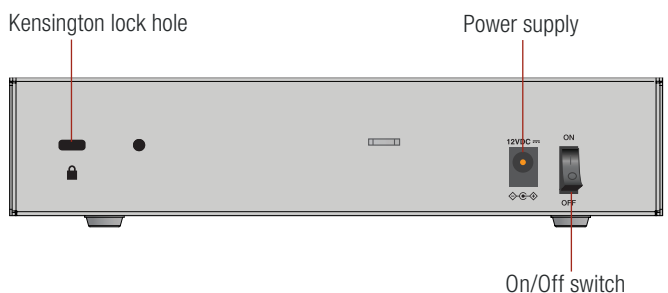
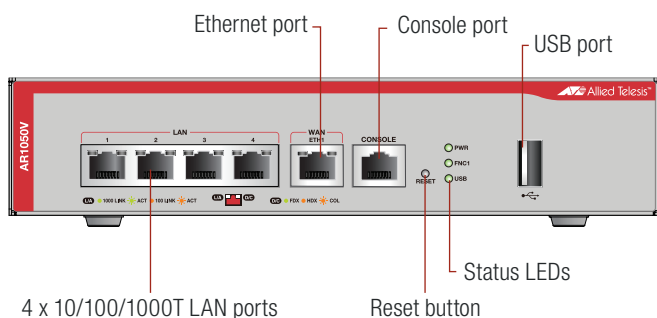
Authentication

- ▶ Strong password security and encryption
- ▶ Two-factor authentication using a code, certificates, or a one time password (OTP) via email for maximum security

VPN Tunneling

- ▶ Diffie-Hellman key exchange
- ▶ Secure encryption algorithms: AES/AES-GCM and 3DES
- ▶ Secure authentication: SHA-1, SHA-256, SHA-512
- ▶ IKEv2 key management
- ▶ IPsec Dead Peer Detection (DPD)
- ▶ IPsec NAT traversal
- ▶ IPsec VPN for site-to-site connectivity
- ▶ VPN pass-through
- ▶ Redundant VPN gateway
- ▶ SSL/TLS VPN for secure remote access using OpenVPN
- ▶ IPv6 tunneling

AR1050V SECURE VPN ROUTER



Specifications

| | AR1050V |
|-----------------------------------|---|
| Processor & memory | |
| Security processor | 1GHz single-core |
| Memory (RAM) | 512MB |
| Memory (Flash) | 128MB |
| Security features | |
| Application proxies | FTP, TFTP, SIP |
| Threat protection | Intrusion Detection/Prevention (IDS/IPS) (Suricata basic rules) |
| Tunneling & encryption | |
| IPsec site-to-site VPN tunnels | 30 (Recommended) |
| Encrypted VPN | IPsec, SHA-1, SHA-256, IKEv2 |
| Encryption | 3DES, AES/AES-GCM (128, 192, 256 bit encryption) |
| Key exchange | Diffie-Hellman groups 2, 5, 14, 15, 16, 18 |
| Point to point | Static PPP, L2TPv2 virtual tunnels |
| Management & authentication | |
| Logging & notifications | Syslog & Syslog v6, SNMPv2C & v3 |
| User interfaces | Scriptable industry-standard CLI, Web-based GUI |
| Management | Telnet client and server, SSH client and server, strong passwords |
| Management tools | Allied Telesis Autonomous Management Framework™ Plus (AMF Plus) Vista Manager EX |
| User authentication | Internal user database |
| Networking | |
| Routing (IPv4) | Static (up to 1024) |
| Routing (IPv6) | Static (up to 1024) |
| IP address management | Static v4/v6, DHCP v4/v6 (server, relay, client), PPPoE |
| NAT | Static, IPsec traversal, Dynamic NAT |
| VLANs | up to 1024 |
| Reliability features | |
| | Modular AlliedWare Plus operating system SNMP traps alert network managers of any issues |
| Hardware characteristics | |
| Input power | 90 to 264V AC, 47 to 63Hz |
| Max power consumption | 13 Watts |
| LAN ports | 4 x 10/100/1000T RJ-45 |
| WAN ports | 1 x 10/100/1000T RJ-45 |
| Other ports | 1 x USB, 1 x RJ-45 console |
| Product dimensions (W x D x H) | 210 mm (8.26 in) x 210 mm (8.26 in) x 44 mm (1.73 in) |
| Packaged dimensions (W x D x H) | 265 mm (10.43 in) x 256 mm (10.08 in) x 109 mm (4.29 in) |
| Product weight | 1.3 kg (2.87 lb) unpackaged, 1.9 kg (4.19 lb) packaged |
| Fanless | Silent operation |
| Environmental specifications | |
| Operating temperature range | 0°C - 40°C (32°F - 104°F) |
| Storage temperature range | -25°C to 70°C (-13°F - 158°F) |
| Operating relative humidity range | 5% to 90% non-condensing |
| Storage relative humidity range | 5% to 95% non-condensing |
| Operating altitude | 3,000 meters maximum (9,843 ft) |

| | AR1050V |
|--|---|
| Regulations and compliances | |
| EMC | EN55032 class B, FCC class B, VCCI Class B |
| Immunity | EN55024, EN61000-3-2, EN61000-3-3 |
| Safety Standards | UL62368-1, EN60950-1, EN55035, CAN/CSA-C22.2 No.60950-1, AS/NZS 60950-1 |
| Safety Certifications | UL, TUV, CE |
| Reduction of Hazardous Substances (RoHS) | EU RoHS compliant, China RoHS compliant |
| IPv6 Ready | Phase 2 (Gold) Logo |

Ordering information

AT-AR1050V-xx

1 x GE WAN and 4 x 10/100/1000 LAN

Where xx = 10 for US power cord
30 for UK power cord
40 for Australian power cord
50 for European power cord
51 for encryption not enabled

AT-RKMT-J14

Rack mount kit to install one device in a 19-inch equipment rack

AT-BRKT-J24

Wall mount brackets

AT-STND-J03

Stand-kit for AT-AR1050V