



Front Door



Rear Door

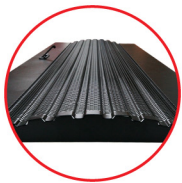


Side Panel

LINK 19" Curve-Wave Rack

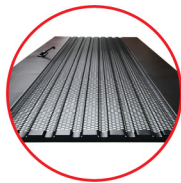
The premium innovation design, an elegant appearance, delivered with best enterprise service, support and reliability. LINK Curve-Wave Rack offered high strength product, high durability and efficiency at work, also can support to install 19" equipment.

Feature Highlights



Curve Wave Door (Front)

Hexa perforated for 120% Ventilation



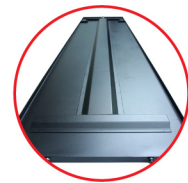
Wave Door (Rear)

Hexa Perforated for 110% Ventilation



Side Panel

Easy to Remove by Slide Lock and Security Lock



Side Panel Support

I-Frame for Supporting The Solid Steel



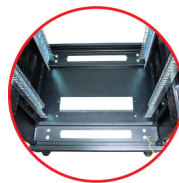
Security Locks

Press and Swing Handel Lock



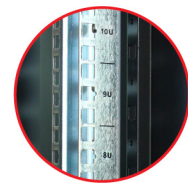
Top Cover

Has the Clip for Cable Entry.



Bottom Panel

Has Slide Shutter and the Clip for Cable Entry.



Mounting Pole

Rack Unit (U) Screen on Pole



LINK Logo

Front Door with LINK Logo



Castor & Stand

Up and down movable stand with 360° castor



Grounding Kit

Connecting Between all Removable Part of Rack

Curve-Wave Rack Features

- Modular knock down platforms with grounding was designed to perform and add accessories.
- Front door are curve with hole (Wave Hexa perforated) for 120% ventilation.
- Rear door was made from Galvanized Steel with hexa perforated for 110% ventilation.
- Support swing handle locked at front and rear door.
- I-frame for supporting the solid steel at side panels (excluding for 15U Rack) and easy to remove by slide locked and security locked for installation and maintenance.
- Raised roof with vented can be mounted the fan sets.
- Base has the slide shutter and the clip for cable entry, Also have cover to close both of front and back when not using.
- Mounting pole with 10x10mm was made from Galvanized steel with Zinc coated, and can be adjustable in/out with Rack Unit (U) screen on pole.
- Up and down movable stand with 360° caster was made from Nylon 6 for comfortably move.
- Cable entry from the top and the base with slide.

Standards

- 19" Standard, ISO9001:2008 (New version 2015) and ISO14001
- ANSI/EIA-310D, IEC297-1, IEC297-2, BS5954 Part : 2, DIN 41494

Specifications

Material

- Frame : 2.0 mm galvanized steel
- Front Door : 1.2 mm galvanized steel
: 5.0 mm Tempered glass
- Rear Door : 1.2 mm galvanized steel
- Side Panel : 1.2 mm galvanized steel
- Mounting Pole : 2.0 mm galvanized steel
with Zinc coated

Surface Finishing

- Electrostatic powder coating, Black (RAL9004)

Maximum Load Capacity

- Static loading : 1000kg

Scope of Delivery

- Cabinets are packed in cartons.

Ordering information

U Height (U=4.45 cm.)	Width (cm.)	Depth (cm.)	Height (cm.)	Order Number
15U	60	60	88	CH-60615CW
	60	80	88	CH-60815CW
27U	60	60	140	CH-60627CW
	60	80	140	CH-60827CW
	60	90	140	CH-60927CW
42U	60	60	207	CH-60642CW
	60	80	207	CH-60842CW
	60	90	207	CH-60942CW
	60	100	207	CH-61042CW
	60	110	207	CH-61142CW
	80	80	207	CH-80842CW
	80	100	207	CH-81042CW
80	110	207	CH-81142CW	